



 **Quantcom**

ABOUT QUANTCOM

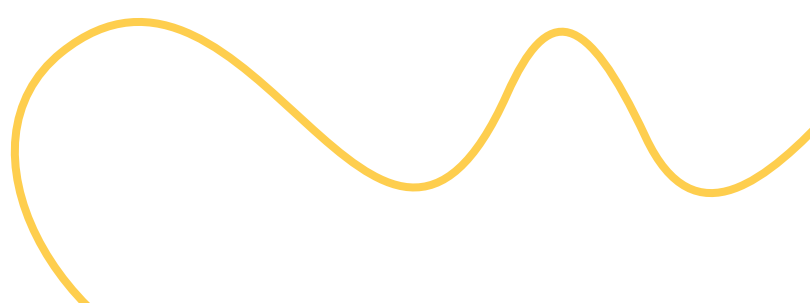
We are a nationwide telecommunications operator, focused on the B2B and wholesale segment. We have been operating in the telecommunications market under the name Dial Telecom for more than 20 years. During that time, we have built, and are further developing, a robust backbone optical network that connects the Czech Republic to other countries. We provide voice, data, internet and hosting services in the selected guaranteed quality, mainly through our own optical network.

Our network, which we constantly monitor from our own monitoring center, is connected to all major international exchanges, has hundreds of direct connections to the largest providers of information and search services and to global operators.

We operate extensive metropolitan optical networks in Prague and Brno, and smaller networks in Ostrava, Pilsen and Hradec Králové. We have connected more than 4,000 buildings, a significant part compiled of existing and newly built business centers, as well as separate branches to industrial areas, corporate establishments or government buildings and schools.

Quantcom is directly connected to the Czech peering exchange **NIX.CZ**. We are also a member of some of the world's international peering centers:

- DE-CIX (Germany)
- AMS-IX (Netherlands)
- VIX (Austria)
- SIX (Slovakia)
- NIX (Slovakia)





For access to international exchanges, we also use our own optical networks with a minimum of active elements along the entire route. As a result, we offer unrivalled lowest latency and latency variations on routes to the world's most important exchanges. For example, the latency Prague–Frankfurt on our network is 3.3 ms. Even a regular end user with international connectivity from Quantcom will experience faster responses when working on the Internet. We are a member of the Fenix Project, which aims to increase network security. Since our founding in 2000, we have made a number of successful acquisitions.

Quantcom is the fourth largest operator in the Czech Republic with a significant and stable position also on the foreign telecommunications market.

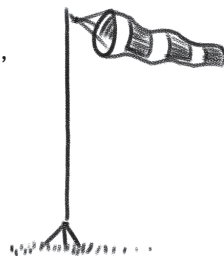
In 2022, we significantly strengthened the field of smart metering and the Internet of Things (IoT) by purchasing the company SOFTLINK s. r. o., the largest operator of a comprehensive solution for online monitoring of energy consumption and comprehensive energy management for commercial customers with more than 90,000 metering points in the Czech Republic. We create complete (end-to-end) solutions for remote readings of water, heat, electricity and gas. For these solutions, we develop and manufacture our own hardware and software, which enables consumption to be monitored, subsequently controlled and optimized, or billed to individual tenants. We operate and supervise the CEM cloud platform ensuring energy management of development projects, local distribution systems, multifunctional buildings, industrial enterprises, retail chains and logistics parks.



COMPANY KEY HISTORY MILESTONES

2000

The establishment of **Dial Telecom, s. r. o.**
The beginning of building the metropolitan, national and international networks in the Czech Republic and in Slovakia.



The purchase of a 100% share in **Telekom Austria Czech Republic** as well as in **eTel Slovensko**.

2008

2005

The acquisition of **InWay, a. s.**

2007

The merger with **net4net (TransgasNet)**, a former daughter company of Transgas).

2010

The purchase of a division of the wholesale of telecommunications services **Master Internet**. The merger with a branch enterprise of **VOLNÝ**.



2011

The establishment of a sister company named **Fiber Services**. The purchase of a 100% share of **MobilKom** and **STAR 21 Networks**.

2012

The establishment of **ET Telekomunikace** by purchasing a part of **ETT ENERGETIKA** and **IMMOENERGETIKA** enterprises.

2013

The merger of **Dial Telecom** and **MAXPROGRES Telco**. The establishment of a daughter company **Telemetry Services** by purchasing **Nowire**.

2016

The acquisition of **Pe3ny Net**.

2015 → 2016

A strategic share in **ČD Telematika**.

The acquisition of **Matrigo**.

2018

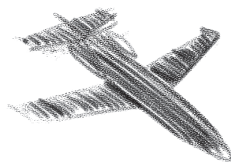
The establishment of a new brand and the change of the company name to **Quantcom, a. s.** Strategic focus of the company on the B2B and wholesale. The acquisition of **SOFTLINK s. r. o.**

2022**2023**

The merger of **Telemetry Services, s. r. o.** and **SOFTLINK s. r. o.** The successor company is **SOFTLINK s. r. o.**

2024

The acquisition of **Letov Telco, s. r. o.**



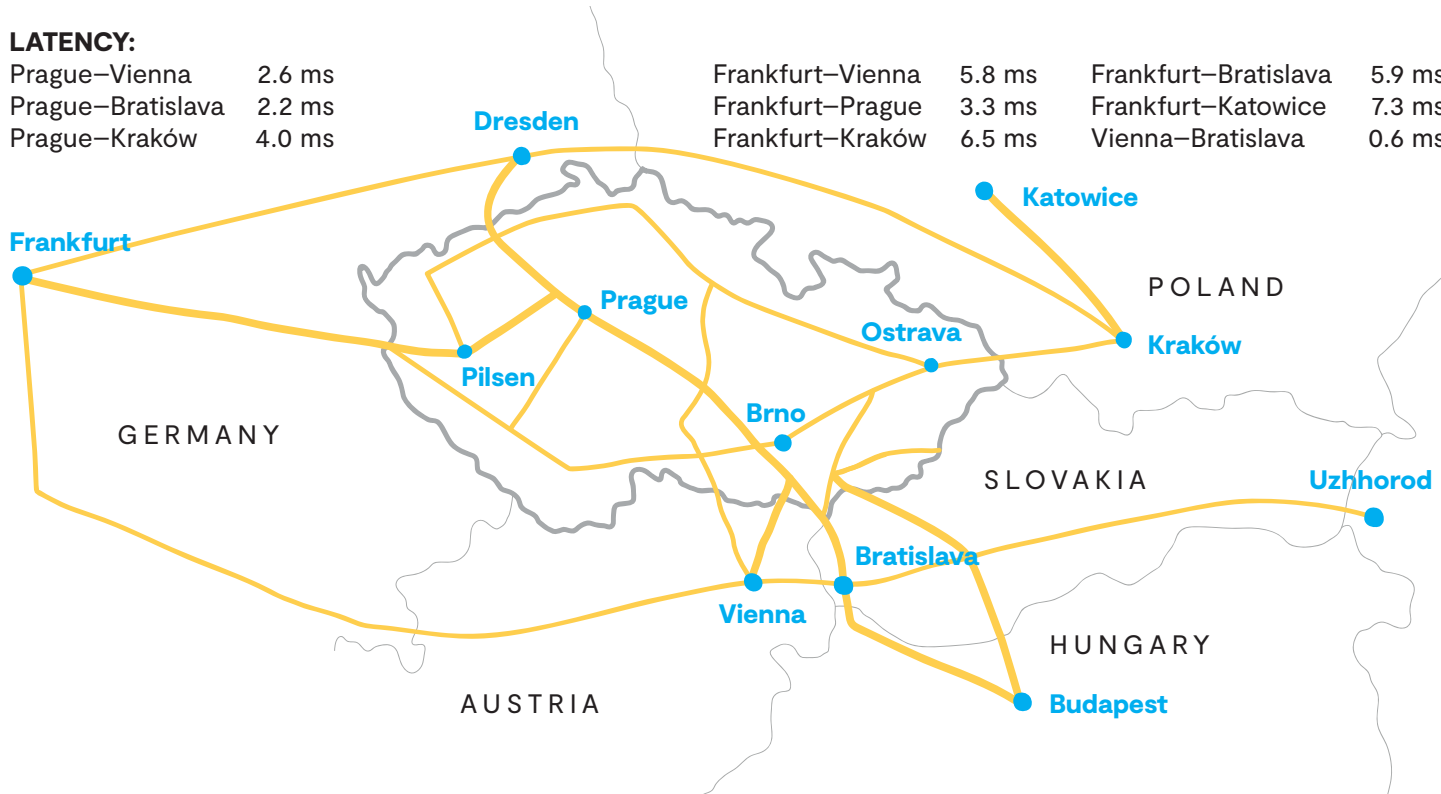
INTERNATIONAL NETWORK

Our international, national and metropolitan networks are built on the infrastructure of our own optical cables and fibers in combination with leased cables and fibers. In addition to terrestrial networks, we also operate an extensive radio network in the Czech Republic in the range of hundreds of transmission points, thus supplementing the coverage of areas without a direct connection to the optical infrastructure. The international exchanges Frankfurt, Vienna, Bratislava, Prague and Krakow are connected in a capacity of several 100 Gbps into a circled topology with branches to large peering centers. Thanks to this, we achieve excellent availability of Internet resources and, in cooperation with global operators, we provide guaranteed capacities for data services.

LATENCY:

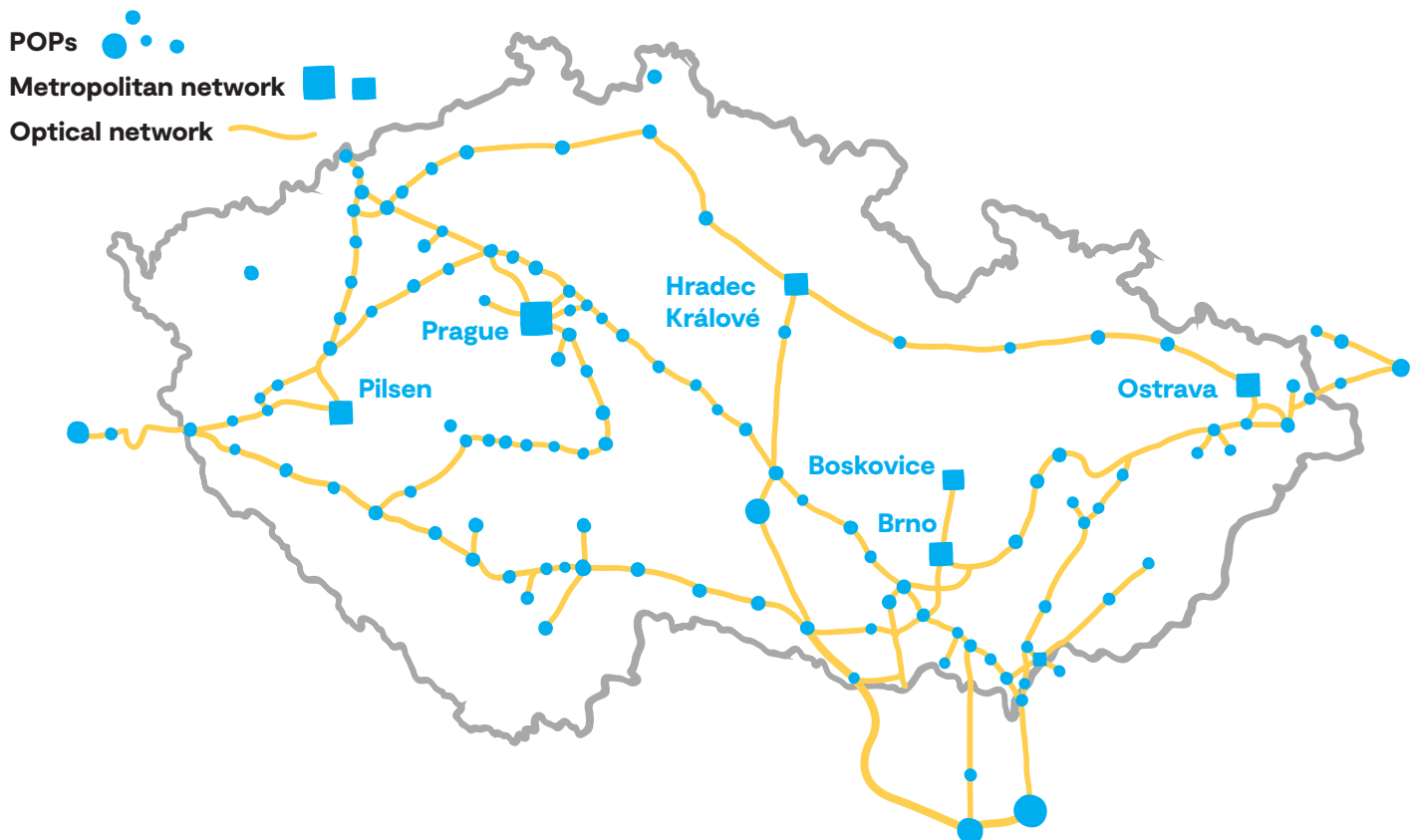
Prague–Vienna	2.6 ms
Prague–Bratislava	2.2 ms
Prague–Kraków	4.0 ms

Frankfurt–Vienna	5.8 ms	Frankfurt–Bratislava	5.9 ms
Frankfurt–Prague	3.3 ms	Frankfurt–Katowice	7.3 ms
Frankfurt–Kraków	6.5 ms	Vienna–Bratislava	0.6 ms



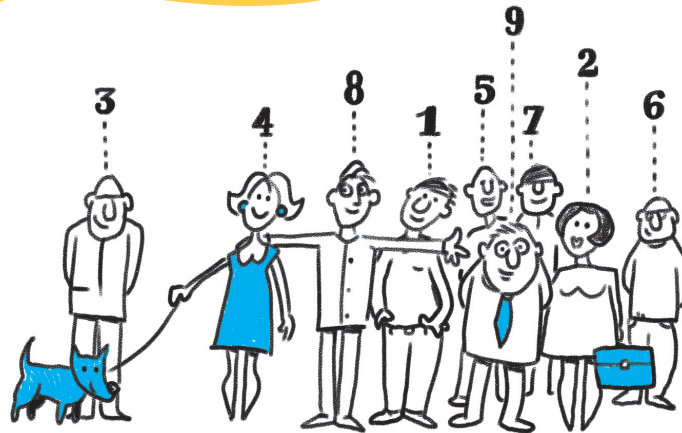
NATIONAL NETWORK

The national network is built in a topology of several overlapping circles with several hundreds of access points with the presence in all regional towns and in most smaller towns (or in their vicinity). Technologically, the optical networks are equipped with the DWDM system enabling the efficient use of capacities, typical transmission speed of $n \times 400$ Gbps while keeping low latency, which is important particularly for transit and backbone capacities.



INTERESTING FACTS

- 4,000+ buildings connected to the metropolitan optical network
- 5,500+ active devices in our own network
- 30,000+ active ports
- 900+ radio connections in our own backbone infrastructure – in the last mile sections with unavailable fiber optical network
- 3.3 ms which is unrivalled lowest latency in our own optical network on the Prague–Frankfurt route
- 3 out of 4 largest technology companies on NASDAQ use Quantcom's infrastructure
- 9 z 10 out of 10 customers are connected through our own optical network



■ **Internet Profi**

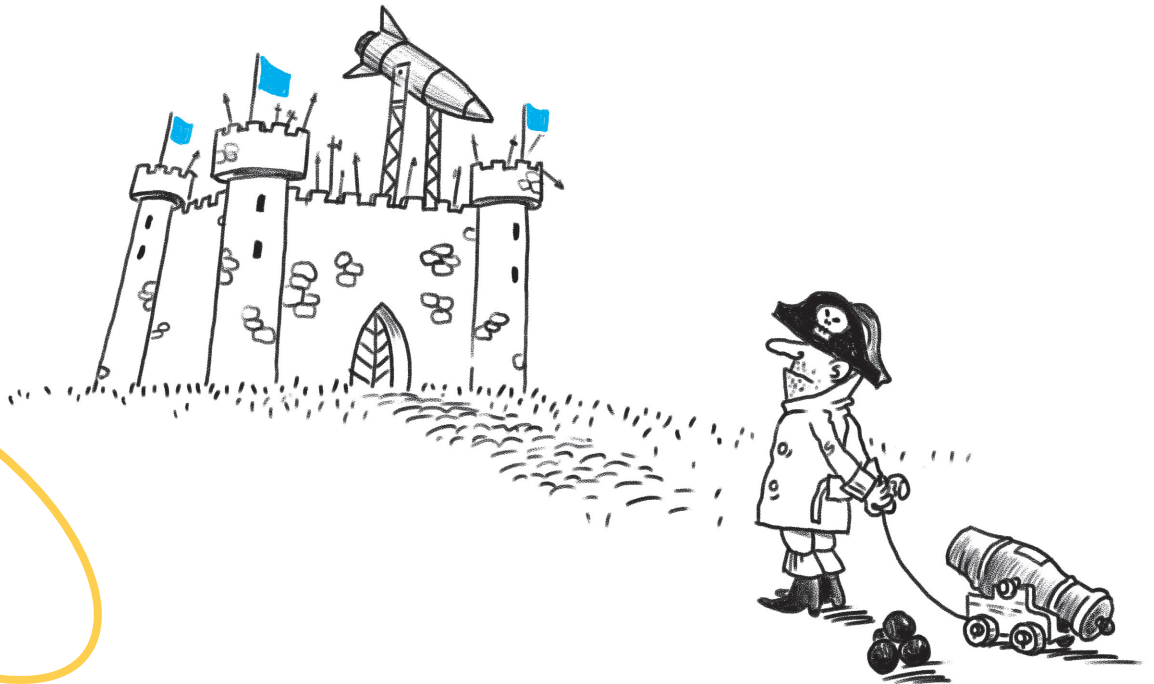
A complex service for company connection to the Internet with a guaranteed symmetrical speed.

■ **Internet Transit**

A complex service for company connection to the Internet with a guaranteed symmetrical speed.



- **Firewall**
Securing Internet communication of the customer, its users, server, LAN network.
- **Anti DDoS**
Protecting the customer from Internet attacks.
- **Backup**
A backup line to the Internet or SD-WAN service.



■ Dark Fiber

Lease of dark fibers in the backbone and metropolitan network terminated on optical connectors in the optical distribution box.

■ Duct

Lease of HDPE ducts in the backbone network.

■ MicroDuct

Lease of a micro duct.

■ Housing

Placing your technology in our network.



■ SD-WAN

A data connection of two or more points into a virtual private network.

■ Ethernet Line

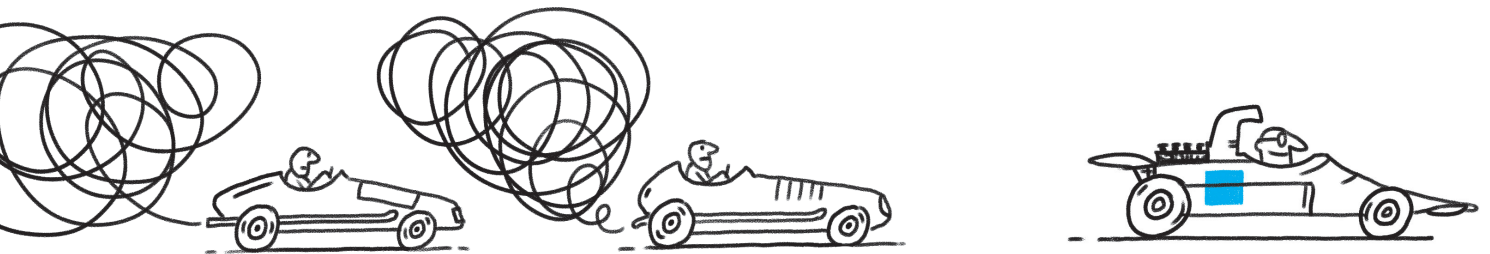
A data connection of two points by a dedicated circuit with guaranteed bandwidth from 2 Mbps up to 400 Gbps.

■ Lambda

A data connection of two points with a predefined course and a typical capacity 10, 100 and 400 Gbps.

■ Cloud Connect

A direct secured connection to the largest cloud services: AWS (Amazon), Google, Azure Microsoft, IBM, Alibaba, Oracle, and others.



■ Cloud Compute

A guaranteed infrastructure in the form of a service for the operation of your applications.

■ Private Cloud

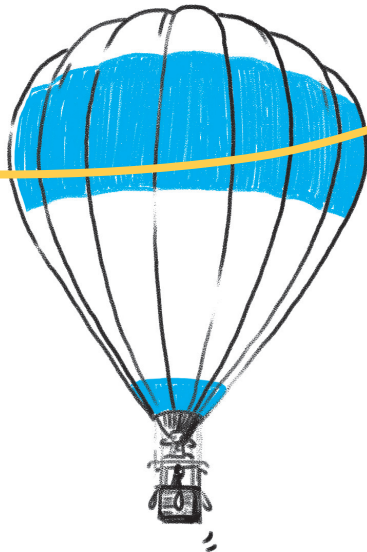
A dedicated infrastructure in the form of a service with high availability.

■ DevOps a Kubernetes

Tools and consultations for the DevOps strategy using Kubernetes technologies.

■ S3 Storage

A modern data storage with geographical redundancy.



■ Phone

A basic Internet telephone service – an IP telephone in the fixed network.

■ Virtual PBX

An extended Internet telephone service – a virtual exchange.

■ Trunk

A connection of the customer's virtual telephone exchange.

■ 800 Numbers

A single telephone number for zero or a discounted price for your customers.

■ 900 Numbers

Numbers intended for the operation of paid information, entertainment or erotic services for both Czech and Slovak market.


■ International Numbers

International numbers routed to the Czech Republic from more than 110 countries around the world (for one or more telephone numbers).



CERTIFICATION

The quality of services is essential for us, which is why we are the holders of:

- **ISO 9001:2009** Quality Management
 - **ISO 14001:2005** Environmental Management
 - **ISO 27001:2006** Information Security Management, i.e. protection of sensitive information from unauthorized access
 - **ISO 45001:2018** Occupational Health and Safety Management – for project planning, deliveries, installations and service of building technology systems, including technological and information systems
- 

Q.cZ

